

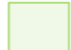

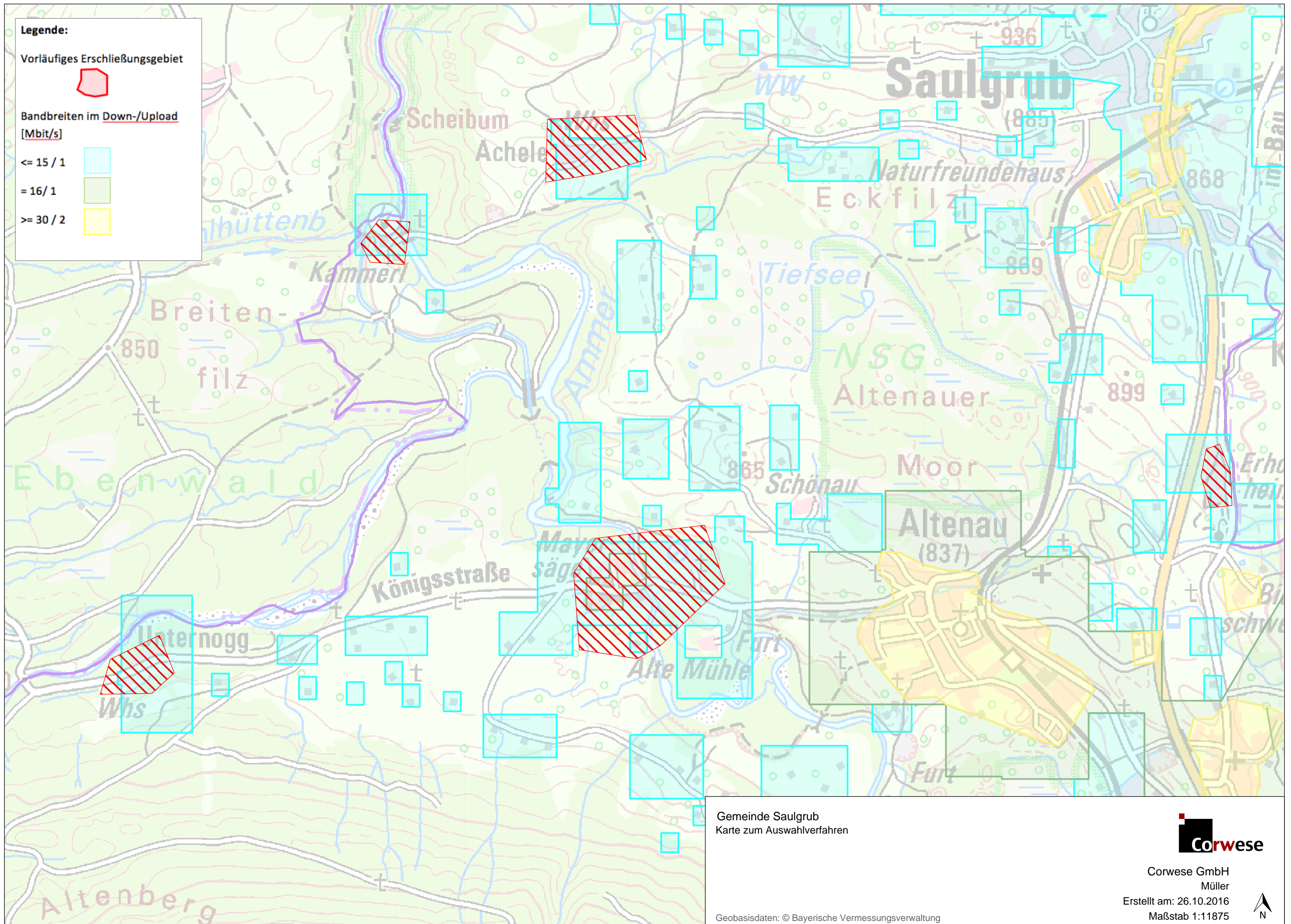


Legende:

Vorläufiges Erschließungsgebiet 

Bandbreiten im Down-/Upload [Mbit/s]

<= 15 / 1	
= 16 / 1	
>= 30 / 2	



Gemeinde Saulgrub
Karte zum Auswahlverfahren



Corwese GmbH
Müller
Erstellt am: 26.10.2016
Maßstab 1:11875

Geobasisdaten: © Bayerische Vermessungsverwaltung

